

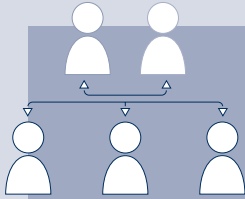


University of Potsdam

A photograph of a modern building with a blue facade and large windows, situated behind a concrete walkway and a water feature with reeds. The scene is brightly lit, suggesting a sunny day.

# FACTS AND FIGURES

# At a Glance



## University Leadership

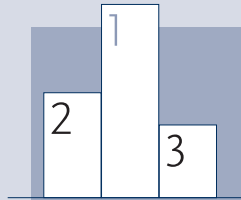
**Prof. Oliver Günther, Ph.D.**  
President

**Dr. Britta van Kempen**  
Vice-President for Educational  
and European Affairs

**Prof. Dr. Barbara Höhle**  
Vice-President for Research,  
Early Career Researchers, and  
Equal Opportunities

**Dr. Peter Kostädt**  
Vice-President for Digitalization and  
Information Management and  
Chief Information Officer

**Hendrik Woithe**  
Chancellor



## Rankings

**#201 – 250**  
Times Higher Education (THE)

**#17**  
THE Young University Ranking 2024

**#301 – 400**  
Shanghai Ranking (ARWU)

**#474**  
QS World University Ranking

**#14**  
Humboldt Ranking 2023

**#5**  
Start-up Radar 2025



## Faculties

- ▶ Law Faculty
- ▶ Faculty of Arts
- ▶ Faculty of Human Sciences
- ▶ Faculty of Economics and Social Sciences
- ▶ Faculty of Science
- ▶ Digital Engineering Faculty
- ▶ Faculty of Health Sciences Brandenburg

Total Campus Area  
**226,496 m<sup>2</sup>**



Budget  
**209**  
million €

Third-Party  
Funding  
**71.3**  
million €



**Campus  
Golm**



**Campus  
Am Neuen  
Palais**



**Campus  
Griebnitzsee**

# Students and Degrees

## New Students

(in the winter semester 2025/26)



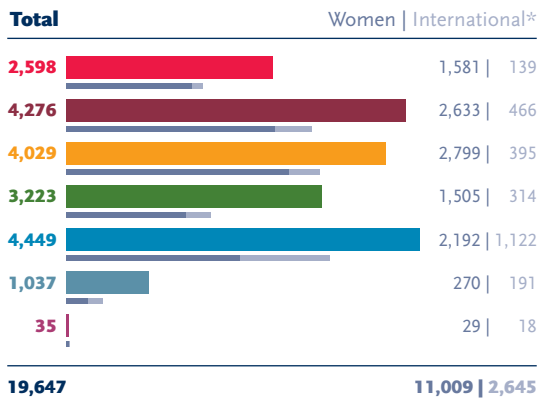
## Student Origins

(in their first semester; winter semester 2025/26)



## Students by Faculty

(in the winter semester 2025/26)



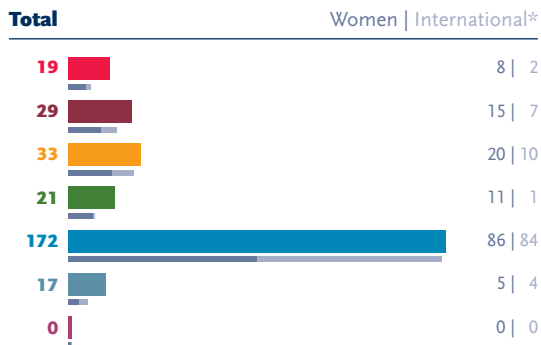
## Academic Degrees

(2025)



## Doctorates

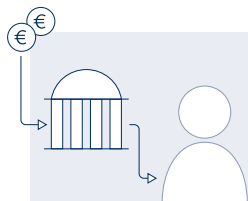
(2025)



■ Law Faculty 
 ■ Faculty of Arts 
 ■ Faculty of Human Sciences 
 ■ Faculty of Economics and Social Sciences 
 ■ Faculty of Science 
 ■ Digital Engineering Faculty 
 ■ Faculty of Health Sciences

\* International students: students from abroad who have obtained their higher education entrance qualification abroad or at a preparatory college

# Staff



**1,076**  
**Staff Funded by External  
or Special Funds**

Women: **613**  
International: **254**



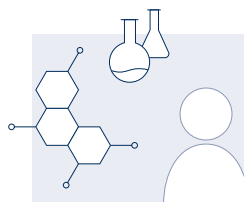
**371**  
**Professorships**

Women: **139**  
International: **42**  
Junior Professors: **20**  
Jointly Appointed Professors: **96**



**1,004**  
**Staff in Technical and  
Administrative Services**

Women: **627**  
International: **44**



**723**  
**Academic Staff**

Women: **391**  
International: **157**

# Global Engagement

## European Digital UniverCity (EDUC)

Cooperation between eight European universities under the leadership of the University of Potsdam

associated university:  
**Nottingham Trent University**

**University of South-Eastern Norway**

**University of Potsdam**

**University of Rennes I**

**University Paris Nanterre**

**Masaryk University**

associated university:  
**Vasyl-Stefanyk Precarpathian National University**

**University of Pécs**

**Jaume I University**

**University of Cagliari**

**96**

## International Partnerships

including **68** university-wide partnerships and **28** faculty-level partnerships. There are also numerous Erasmus exchange agreements.

**2,645**

## International Students

from **120** countries

**36**

## International Degree Programs

**29** are held in English

29

32

18

10

5

# Impact

## Industry & Business Partnerships

Partners: 59

## Public Engagement

Civil Society Partnerships: 11  
Participatory Science  
Communication Initiatives: 15

## Citizen Science

Ongoing Citizen  
Science Projects: 6

## Potsdam Transfer

Start-ups: 28  
EXIST Start-up Grants: 3  
Active Patent Projects: 41  
Trade Fair Participation: 2  
Industry Research Partnerships: 6  
Knowledge Transfer Projects: 11  
International Partnerships: 14

## Awards

Guido Reger Start-Up Award  
Sectorlens GmbH  
Technology Transfer Award  
Dr. Johannes Gurke



## Highly Cited Researchers

Prof. Dr. Dieter Neher

### Joint Appointments:

Prof. Dr. Gabriele Berg  
(Leibniz Institute for Agricultural Engineering and Bioeconomy ATB))

Prof. Dr. Martin Herold  
(GFZ Helmholtz Center for Geosciences)

Prof. Dr. Johan Rockström  
(Potsdam Institute for Climate Impact Research (PIK))

Prof. Dr. Philipp A. Wigge  
(Leibniz Institute of Vegetable and Ornamental Crops (IGZ))

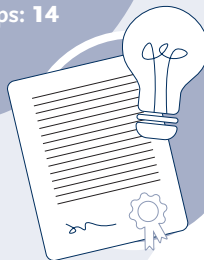
## UP Transfer GmbH

Continuing Education  
Master's Degree  
Programs: 5



## Potsdam Science Park

innoFSPEC Transfer  
Laboratory  
GO:IN 1 & 2



# Research

## Affiliated Institutes

- ▶ Abraham Geiger College
- ▶ Academy for Psychotherapy and Intervention Research
- ▶ Association for Further Qualification in the Education Sector (WiB)
- ▶ Institute of Applied Family, Childhood and Adolescence Research
- ▶ Moses Mendelssohn Center for European-Jewish Studies
- ▶ Protestant Institute for Church Law
- ▶ Zacharias Frankel College

## Scientific Institutions

- ▶ Botanical Garden
- ▶ Brandenburg Center for Media Studies
- ▶ Center for Teacher Training and Education Research
- ▶ Human Rights Center
- ▶ Institute of Local Government Studies
- ▶ Potsdam Graduate School
- ▶ Religions in Context Forum
- ▶ Study Quality Network of Brandenburg
- ▶ Theodor Fontane Archive
- ▶ University Outpatient Clinic

## Research Priorities

- ▶ Cognitive Sciences
- ▶ Education for the Future
- ▶ Evolutionary Systems Biology
- ▶ Individual-Based Global Change Ecology
- ▶ Sustainable Materials Design

## Cooperation with Scientific Institutions in the Region

Potsdam Science Park with Max Planck and Fraunhofer Institutes



- ▶ Berlin Social Science Center (WZB)
- ▶ German Institute for Economic Research (DIW) (Berlin)

Leibniz Institute for Agricultural Engineering and Bioeconomy

Leibniz Institute for Astrophysics Potsdam (AIP)

Leibniz Center for Agricultural Landscape Research (ZALF) (Müncheberg)

Hasso Plattner Institute for Digital Engineering

- ▶ GFZ Helmholtz Center for Geosciences
- ▶ Potsdam Institute for Climate Impact Research (PIK)
- ▶ Alfred Wegener Institute (AWI)

German Electron Synchrotron DESY (Zeuthen)

German Institute of Human Nutrition Potsdam-Rehbrücke (DIfE)

Helmholtz Center for Environmental Research UFZ (Leipzig)



# CONTACT

## University of Potsdam

Am Neuen Palais 10 | 14469 Potsdam

Phone: 0331 977-1474 | E-Mail: [presse@uni-potsdam.de](mailto:presse@uni-potsdam.de)

**Editor:** Press and Public Relations Department  
at the University of Potsdam

**Last updated:** April 2026

The information provided is for the year 2025.

**Design:** unicom-berlin.de

**Print:** Kern GmbH



[www.blauer-engel.de/uz195](http://www.blauer-engel.de/uz195)

- ressourcenschonend und umweltfreundlich hergestellt
- emissionsarm gedruckt
- überwiegend aus Altpapier

WK9

Dieses Druckerzeugnis wurde mit dem Blauen Engel ausgezeichnet